

BOILERS AND HYBRID SOLUTIONS

HIGH CAPACITY CONDENSING ≥ 35 KW

CONDENSA TM - TM CASCADE

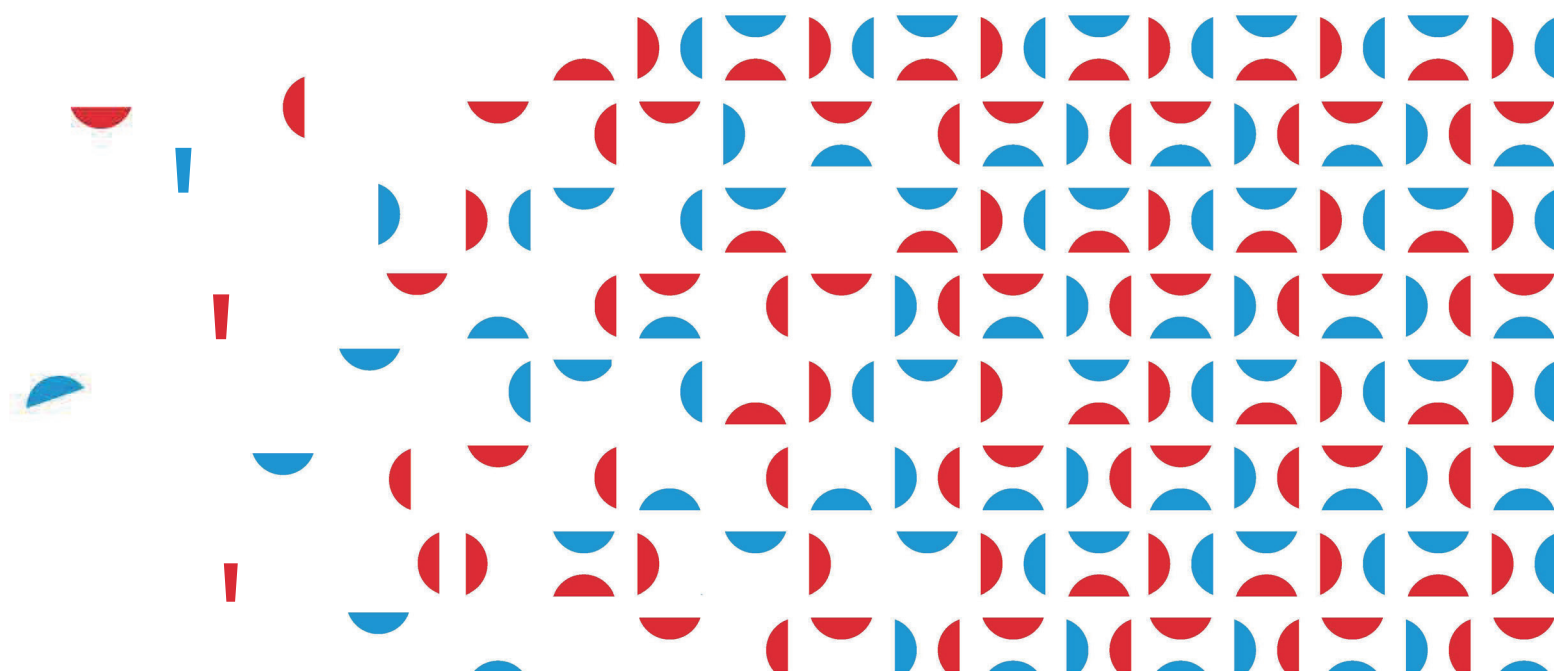


WENKEL S.R.L

Via Principale, 41 – 31030 Casier (TV)

Tel. +39 0422 672911

info@heizersile.it – www.heizersile.com



High capacity condensing ≥ 35 kW

CONDENSA TM - TM cascade



Monobloc modular floor-standing boilers, pre-mixed and condensing with constant and very high efficiency, working with natural gas, for heating and set up for DHW production with remote water heater. Consisting of: stainless steel boiler' body, forced draught, DN80 supply and return manifolds with right or left outlet, circulator pump, electric control panel with set-up for hot water production. Electronic control: flame ionization and continuous modulation electronic ignition with micro-processor. Sliding temperature operation with external probe (optional). Every generator is standard supplied with all the devices, excluding the fuel shut-off valve, required by Raccolta "R" ed. 2009, chapter R.3.B. I.N.A.I.L. for generators with Power > 35 kW. IPX4D electric protection. For cascade installation (TM cascade), add INAIL MANIFOLD KIT (see Optional accessories, complete with fuel intercetion valve).



Codes/Prices

Model	Code	Price
114 TM	00061600114	
150 TM	00061600150	
114 TM cascade	00061630114	
150 TM cascade	00061630150	

Technical features for TM

Model	Max. output power 50/30°C kW	Exempt from Fire prot. cert.	Set-up for DHW production with water heater	Fumes drain coupling Ø	INAIL equipment required by Raccolta "R" (fuel shut-off valve excluded)	Dimensions (HxLxD) mm	Weight when empty kg
114 TM	120,0	•	•	100	•	1180x550x880	200
150 TM	157,0	--	•	100	•	1180x550x880	200

Technical features for TM cascade with INAL safety socket

Model	Max. output power 50/30°C kW	Dimensions with INAIL manifold and Exchanger (HxLxD) mm	Modules composition	Fumes exhaust systems	Weight when empty with INAIL manifold and Exchanger kg	Manifold diameter Ø
CONDENSA TM 228	240,0	1180X2218X880	n°2 base modules 114	PF22	500	DN 80
CONDENSA TM 262	277,0	1180X2218X880	n°2 base modules 114-150	PF22	500	DN 80
CONDENSA TM 296	314,0	1180X2218X880	n°2 base modules 150	PF22	500	DN 80
CONDENSA TM 342	360,0	1180X2778X880	n°3 base modules 114	PF33	700	DN 80
CONDENSA TM 376	397,0	1180X2778X880	n°3 base modules 114+114+150	PF33	700	DN 80
CONDENSA TM 410	434,0	1180X2778X880	n°3 base modules 114+150+150	PF33	700	DN 80
CONDENSA TM 444	471,0	1180X2778X880	n°3 base modules 150	PF33	700	DN 80

To the price of the boiler, add the price of the INAIL MANIFOLD KIT and the price of the hydraulic separator DN 80 code 85077270459 or plate heat exchanger (see page 54) to be chosen accordingly to the cascade configuration and operating temperature.

Optional accessories

Model	Page ref.	Code	Price
External temperature probe	56	85077520502	
Remote control for room temperature adjustment	56	85077520056	
P15 exchanger with 30 plates DN80 (valid for a single TM version boiler: for TM cascade versions in cascade, see page 54)	54	00891180650	
DN80 hydraulic separator with deaerator and exhaust	-	85077270459	
INAIL MANIFOLD KIT (excluding pre-assembly of safety devices)	-	00891180219	
INAIL MANIFOLD KIT (including pre-assembly of safety devices, insulation and testing)	-	00891180419	
EXPANSION BOARD electronic functions (port 0-10 for remote control - remote alarm status system)	56	00891180081	
SQ control panel for cascade installation (TM cascade versions only)	56	85077510407	
Domestic hot water control kit	-	00891180130	
Secondary circuit pump control kit	-	00891180131	
Dirt separator filter DN80 (recommended for protecting the generator)	55	85077110140	
Fuel shut-off valve for TM 114 and TM 150	53	85077110011	
NC2 condensate neutraliser (2 or more neutralisers depending on power used) Max 350 kw each	55	85077261815	

KIT PF - Fumes exhaust systems in P.P. for cascaded versions

Model	Page ref.	Code	Price
KIT PF22 - Pressurised fumes manifold for connecting 2 generators	57	00891180321	
KIT PF33 - Pressurised fumes manifold for connecting 3 generators	57	00891180325	
Single 1-meter pipe in PP with tapered end section in stainless steel Ø 100 (one for every generator)	-	00891180095	