

# EXPANDERS

## EXPANSION VESSELS

6 BAR 110°C

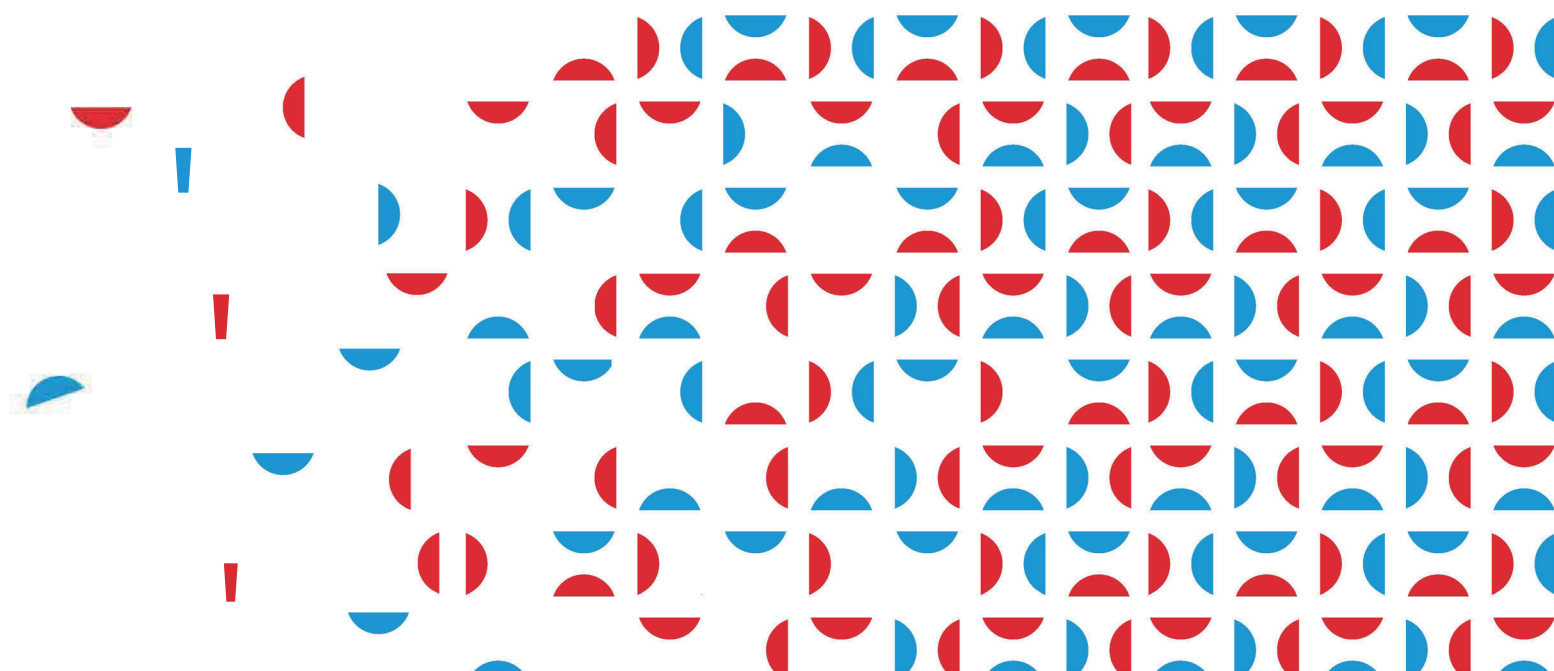


**WENKEL S.R.L**

Via Principale, 41 – 31030 Casier (TV)

Tel. +39 0422 672911

[info@heizersile.it](mailto:info@heizersile.it) – [www.heizersile.com](http://www.heizersile.com)



# Expansion vessels

## 6 bar 110°C



**OPERATION AT CONSTANT PRESSURE AND VARIABLE LEVEL**

Self-pressurised closed expansion vessels, with no diaphragm, for radiator hot water, anti-rust external coating; to be pressurised with air or nitrogen.

Suitable for limiting the expansion of the water and maintaining constant pressure during system operation through the automatic discharge/input of the gas.

Max allowable pressure 6 bar

Max allowable temperature 110°C

CE certified according to European Dir. 2014/68/UE-PED, the expanders are subject to the Declaration of putting into service (Italian Min. Decree 329 of 01/12/2004).

Insulation in mineral wool (see page 317)

**SURCHARGE FOR ADAPTATION OF COUPLINGS TO EXISTING TANK**



Accessories “A”   Accessories “B”

■ Technical features

Capacity	Weight	Effective expansion capacity *	Expansion coupling	Dimensions	
l	kg	l	Ø	Ø mm	H mm
300	70	165	1" 1/2	550	1500
500	100	305	1" 1/2	650	1800
800	140	500	2"	790	1960
1000	160	640	2"	790	2360
1500	220	890	2" 1/2	1000	2270
2000	320	1200	2" 1/2	1100	2450
3000	440	1670	DN 100	1300	2670
4000	600	2810	DN 100	1300	3470
5000	640	3570	DN 100	1400	3700

\* The effective expansion capacity is shown on the level indicator  
NB: Ask for a quote for capacity and pressures.

**NOTE**  
The specified heights refer to the product without safety valve (about 10 cm).

■ Codes prices

Capacity	EXPANDERS WITHOUT ACCESSORIES (tank only) P.E.D. certified as "EQUIPMENT"			MONOBLOC EXPANDERS with accessories type "R" P.E.D. certified as "ASSEMBLY".		MONOBLOC EXPANDERS with accessories type "A" for filling air with compressor P.E.D. certified as "ASSEMBLY".		MONOBLOC EXPANDERS with accessories type "B" for filling air from mains P.E.D. certified as "ASSEMBLY".	
	l	Code	Price	Code	Price	Code	Price	Code	Price
300	00713850300			00713800302		00713800300		00713800301	
500	00713850500			00713800502		00713800500		00713800501	
800	00713850800			00713800802		00713800800		00713800801	
1000	00713851000			00713801002		00713801000		00713801001	
1500	00713851500			00713801502		00713801500		00713801501	
2000	00713852000			00713802002		00713802000		00713802001	
3000	00713853000			00713803002		00713803000		00713803001	
4000	00713854000			00713804002		00713804000		00713804001	
5000	00713855000			00713805002		00713805000		00713805001	

**"R" series of accessories** (pre-assembled) includes: P.E.D. Certified safety valve, pressure gauge with pressure gauge holder valve, level indicator and protection, drain valve.

**"A" series of accessories** (pre-assembled with electric cabling on IP54 panel) includes: level indicator/s with glass and protection, spring safety valve for air, pressure gauge with three-way valve, thermometer, electric float switch (from 300 to 2000 level check with probe), minimum safety level check with probe, two pressure switches, air outlet solenoid valve, automatic electric air compressor 0.96 kW, drain valve.

**"B" series of accessories** (pre-assembled with electric cabling on IP54 panel) includes: level indicator/s with glass and protection, spring safety valve for air, pressure gauge with three-way valve, thermometer, electric float switch (from 300 to 2000 level check with probe), minimum safety level check with probe, two pressure switches, air outlet solenoid valve, automatic air filling unit from mains consisting of pressure regulator with filter and pressure gauge, non-return and shut-off valve, air inlet solenoid valve, drain valve.